



# CLOSE-UP

Published Bi-Monthly by Missouri Nature and Environmental Photographers  
Volume 23, Number 1  
January - February 2018



# MoNEP News

## President's Message

2017 was the year of the solar eclipse. From early in the year, beginning with a solar filter-making workshop, to the big event on August 21st, many of our members prepared to experience this rare phenomenon and then put their cameras to work photographing it. The results were clearly visible as they played a starring role in the holiday show. Thanks very much to Steve Sands for all he did to help prepare the members who wanted to photograph the eclipse and to Tim Bade for offering members a private place to view and photograph it.

Early in 2017 we sent out a survey to find out what activities our members wanted us to offer. Thanks to Mark McAmish for initiating this effort. Based on results, we successfully focused on many of the frequently requested items, with the help of many MoNEP members. Thanks to the volunteers who agreed to lead events, including Dug Threewitt for his nighttime photography session, Robert Charity for leading a group in the St. Francois area, and Mark McAmish for the fall field trip to Hawn State Park. We are still referencing the surveys and finding ways to implement requests. We hope to involve more members in 2018 and need your help to keep these events growing.

2017 saw us return to Powder Valley, which provides us with a much more comfortable setting for meetings. It also required us to shift the meetings to a 6:30 start time. Thanks for your patience as we adjust to the change in timing. We have all our 2018 dates listed in this newsletter and are looking forward to other opportunities with Powder Valley.

If you have not renewed your membership, we hope that you take time to renew for 2018 and share in another great year of programs, field trips and friendships. Wishing everyone a healthy and happy new year.

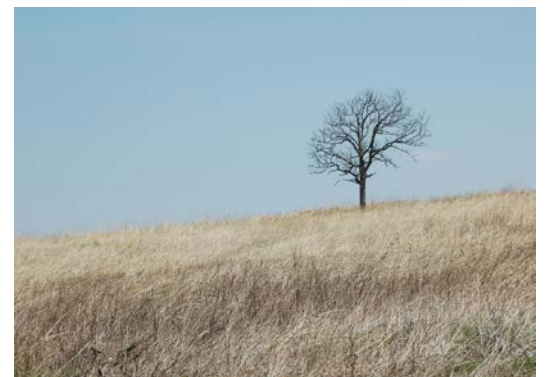
- Scott Avetta

## Holiday Show and Party 2017

Thank you to all who helped with the planning and preparations for the 2017 holiday show and party. As always, we are especially grateful to Jerry Miller and Pat Burgess for all the hard work they put into creating a great presentation using images submitted by 40 members, selecting several hundred for the show, arranging them and setting them to music. Thank you to the party organizers including Kathy and Mark Cherry, and Lydia Toth, to those who brought food and to the people who assisted with setup and cleanup. We had a strong turnout and appreciate everyone's participation to make it a most enjoyable evening.

## MoNEP Members' Exhibit at Shaw Nature Reserve

In celebration of the 100th anniversary of Missouri State Parks, MoNEP mounted an exhibit called A Walk in the Park. The images represent the scenic beauty and natural encounters our parks and nature areas provide to millions of visitors each year. Originally mounted at Powder Valley Nature Center, part of the exhibit is now on display in the Bascom House at Shaw Nature Reserve. The images that are on display at Shaw consist of those that were taken in Missouri. The exhibit will reside at the Nature Reserve until mid-spring.



*Image by Barbara Addelson*

Cover Images (from left to right and top to bottom):

Donald Adams, Joe Klipsch, Robert Charity, Roxanna Cummings, Mark Cherry, Bob Schmidt, Norma Mull, Larry Terrell, Larry Morrison, Allen Ahner, Don Morice

## Members and Membership

### 2018 Membership Renewals

MoNEP membership runs from January through December each year, so it is time for all members to renew! Dues are \$30 per person and \$40 for a household of up to four. There are three ways to renew your membership:

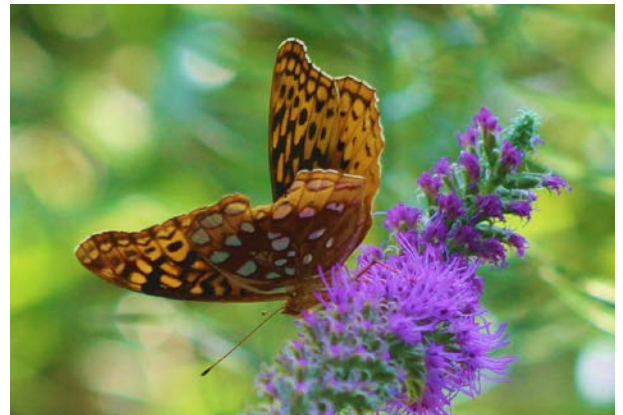
1. Membership dues may be submitted in person at the monthly MoNEP meetings along with your completed form. You can pay with cash or by a check made out to MoNEP. If you pay by cash, please be sure to have the exact amount.
2. You can mail your renewal form, along with a check made out to MoNEP, to the MoNEP membership chair, Michelle Jones at 45 Bellerive Acres, St. Louis, Missouri 63121. Please do not mail cash.
3. You can pay online using PayPal by visiting our website at <http://monep.org/membership.html>.

If you have questions about membership, please contact Michelle Jones at 314-496-7616 or by email at [michellecjones92@gmail.com](mailto:michellecjones92@gmail.com).

### Member News

Roxanne Cummings had a photograph chosen for the Great Rivers Photography Exhibition. The exhibition will be held at the Army Corps of Engineers National Great Rivers Museum in Alton, Illinois through March 28th.

Scott Avetta will be teaching a variety of photography classes at the Missouri Botanical Garden, Shaw Nature Reserve, and Butterfly House this spring. If you are interested, class listings and registration will be posted on February 1st at <http://www.missouribotanicalgarden.org/learn-discover/adults/classes-tours-workshops.aspx>Class.



*Image by Roxanne Cummings*

## MoNEP Meetings

### Meeting Dates, Times and Locations for 2018

MoNEP meetings are held on the third Tuesday of each month, except for the December meeting. MoNEP meets at Powder Valley Conservation Area Nature Center in Kirkwood. Powder Valley's address is 11715 Cragwold Rd., Kirkwood, MO 63122. The meetings run from 6:30 p.m. - 8:30 p.m. The dates for meetings in 2018 are:

January 16  
April 17  
July 17  
October 16

February 20  
May 15  
August 21  
November 20

March 20  
June 19  
September 18  
December 18

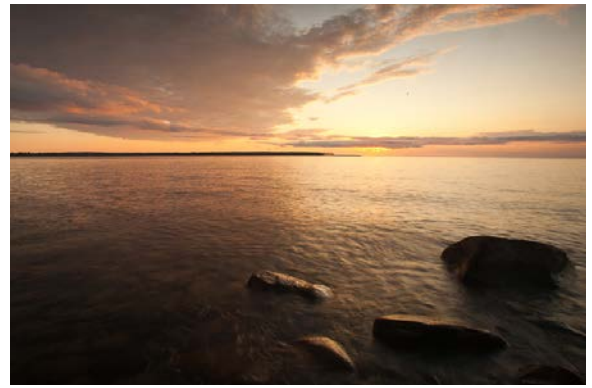
## Show and Share Nature Images

*Submissions Due Dates: 1/13 for the January 16th Meeting, 2/17 for the February 20th Meeting*

Members are invited to share up to five (5) nature-related images at the upcoming meetings. For those members who would like a little inspiration for Show and Share, we offer a suggested topic each month. These are suggestions only, and you may show any nature related images you would like. January Meeting Theme: *The Big Chill* or Photographer's Choice

To submit for Show and Share:

- Resize images so vertical images are 1,800 pixels high and horizontal images are 1,800 pixels wide.
- Name your images according to the directions at [monep.org](http://monep.org) under tips.
- Save your images as .jpg files.
- Compress your five resized images into a zip file.
- Attach the zip file to an email addressed to [share@monep.org](mailto:share@monep.org) by midnight, Saturday, January 13th for the January meeting and February 17th for the February meeting.



*Image by Scott Avetta*

Although submissions usually get an email response before the meeting, if you do not get a notice and want to confirm that your submission has been received, please contact Jerry Miller by email at [sirlukeman@yahoo.com](mailto:sirlukeman@yahoo.com) or by phone at 314-517-6395. For further instructions see Uploading Show and Share Images in the tips section at [monep.org](http://monep.org).

### January 16th Meeting – Scott Avetta

MoNEP President, Scott Avetta will be presenting on *Nature's Compositions* at the January meeting. Although the general guidelines of composition are helpful to know, often they do not apply exactly in the chaotic natural world. Scott will cover some things to think about while composing images in the field. Making minor adjustments can make a huge difference in your final image.

### February 20th Meeting – Quinn Long

Dr. Quinn Long, the recently appointed Director of Shaw Nature Reserve, will be our guest presenter in February. Dr. Long will discuss natural history and ecology of the North American tallgrass prairie, with an emphasis on both historical processes that shaped these grasslands and contemporary threats to their conservation.

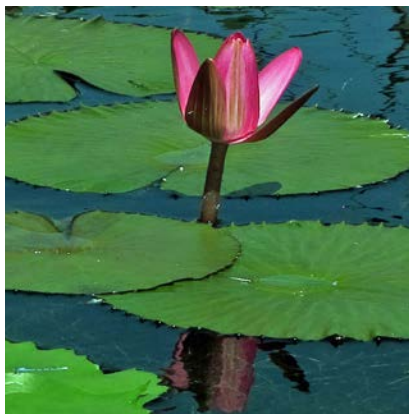
Dr. Long received his Bachelor's degree in Biology from the University of Missouri-Columbia and his PhD in Ecology and Evolutionary Biology from the University of Kansas. Prior to assuming the role of Director at the Shaw Nature Reserve this past summer, he served as a conservation biologist at the Missouri Botanical Garden's Center for Conservation and Sustainable Development. Living near the Nature Reserve growing up, he spent much of his youth there, exploring its different habitats. He became interested in restoration ecology at the Nature Reserve as an undergraduate student and was inspired to restore native woodlands, grasslands, and wetlands on his family's property in northwestern Franklin County.

The mission of the Missouri Nature and Environmental Photographers is to provide a forum for individuals interested in the field of nature photography and the environment, provide education, gather and disseminate information, and promote nature photography as an art form and medium of communication.

Monthly meetings are held on the 3rd Tuesday of the month, except for December. Meetings start at 6:30 pm. Specific dates and meeting locations are posted in the newsletter and on the website. The bi-monthly newsletter is edited by Barbara Addelson and designed by Dug Threewitt.

Visit our website at [www.monep.org](http://www.monep.org)





# CLOSE-UP

Published Bi-Monthly by Missouri Nature and Environmental Photographers  
Volume 23, Number 2  
March - April 2018



# MoNEP News

## 2018 Membership Renewals – Last Call

MoNEP membership runs from January through December each year. If you have not already done so, please renew your membership now. We will purge the membership rolls after the March meeting and those who haven't renewed by then will no longer receive the MoNEP newsletter and email announcements. Dues are \$30 per person and \$40 for a household of up to four. There are three ways to renew your membership:

1. Membership dues may be submitted in person at the monthly MoNEP meetings along with your completed form. You can pay with cash or by a check made out to MoNEP. If you pay by cash, please be sure to have the exact amount.
2. You can mail your renewal form, along with a check made out to MoNEP, to the MoNEP membership chair, Michelle Jones at 45 Bellerive Acres, St. Louis, Missouri 63121. Please do not mail cash.
3. You can pay online using PayPal by visiting our website at <http://monep.org/membership.html>.

If you have questions about membership, please contact Michelle Jones at 314-496-7616 or by email at [michellecjones92@gmail.com](mailto:michellecjones92@gmail.com).

## MoNEP Members' Exhibit at Shaw Nature Reserve

In celebration of the 100th anniversary of Missouri State Parks, MoNEP mounted an exhibit called *A Walk in the Park*. The images represent the scenic beauty and natural encounters our parks and nature areas provide to millions of visitors each year. Originally mounted at Powder Valley Nature Center, part of the exhibit is now on display in the Bascom House at Shaw Nature Reserve. The images that are on display at Shaw consist of those that were taken in Missouri. The exhibit will reside at the Nature Reserve until mid-April.



*Image by Susan Standish*

## Members and Membership

### New Members

We would like to welcome our newest members: Kathleen Broderick, Michael Kennedy, and Dean and Suzzie Schweigert. Thanks for joining us! We encourage you to reach out to any of the Board or other members for information and ideas. We also ask all our members to help make these newcomers feel welcome.

### Member News

Margy Terpstra will have an exhibit of some of her bird images at Powder Valley Nature Center in May. The exhibit, entitled *Warblers!*, features Margy's photographs of 29 different species of these little jewels as they feed, drink, and bathe in and around her backyard stream and water bubbler.

Ted Moreno was appointed to the Board of Directors of the North American Nature Photography Association (NANPA) in February 2018. Ted has been a NANPA member since 2006; serving as the Chair of the Awards Committee since 2015, and as a member of the Membership Committee since 2013. He has attended every NANPA Summit beginning with the very first one in 2011, which was held in McAllen, Texas.

Cover Images (from left to right and top to bottom):

Jerry Miller, Karen Bade, Mac MacKay, Allen Ahner, Linda Moder, Christy Lonero, Norma Mull, Larry Morrison, Toni Armstrong, Jane Griesenauer, Don Morice

# MoNEP Meetings and Field Trips

## Meeting Dates, Times and Locations

*Dates: Tuesday, March 20th from 6:30 to 8:30 pm  
Tuesday, April 17th from 6:30 to 8:30 pm*

MoNEP meetings are held on the third Tuesday of each month, except for the December meeting. MoNEP meets at Powder Valley Conservation Area Nature Center in Kirkwood. Powder Valley's address is 11715 Cragwold Rd., Kirkwood, MO 63122. The meetings run from 6:30 p.m. - 8:30 p.m.

## Show and Share Nature Images

*Submissions Due Dates: 3/17 for the March 20th Meeting, 4/14 for the April 17th Meeting*

Members are invited to share up to five (5) nature-related images at the upcoming meetings. For those members who would like a little inspiration for Show and Share, we offer a suggested topic each month. These are suggestions only, and you may show any nature related images you would like.  
*March: Insects and April: New Beginnings*

To submit for Show and Share:

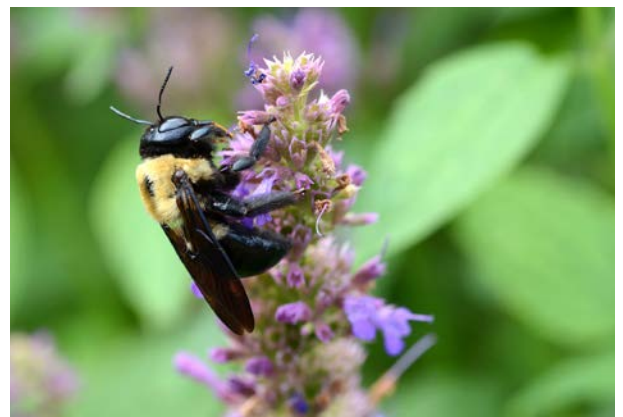
- Resize images so vertical images are 1,800 pixels high and horizontal images are 1,800 pixels wide.
- Name your images according to the directions at [monep.org](http://monep.org) under tips.
- Save your images as .jpg files.
- Compress your five resized images into a zip file.
- Attach the zip file to an email addressed to [share@monep.org](mailto:share@monep.org) by midnight, Saturday, March 17th for the March meeting and April 14th for the April meeting.

Although submissions usually get an email response before the meeting, if you do not get a notice and want to confirm that your submission has been received, please contact Jerry Miller by email at [sirlukeman@yahoo.com](mailto:sirlukeman@yahoo.com) or by phone at 314-517-6395. For further instructions see Uploading Show and Share Images in the tips section at [monep.org](http://monep.org).

## March 20th Meeting

Did you know there are around 3,500 species of bees in North America? Chris Hartley of the Sophia M. Sachs Butterfly House in Faust Park will provide an introduction to the most common bees found in Missouri. He will cover where they live, which flowers attract them, and some very simple identification tips. He will talk about where these bees nest and will share some interesting biological information that will help us find and photograph them outdoors.

Chris was born in Georgia and has loved insects all his life. He grew up roaming through the woods and looking under rocks and started learning every bug he could find. He attended the University of Georgia where he got his



*Image by Dave Alexander*

undergraduate degree in biology and his Masters in entomology. Chris moved to St. Louis in 2006 to work at the Butterfly House as an entomologist and education instructor and is now the Science Education Coordinator there. In 2016, the Butterfly House started Project Pollinator in collaboration with the St. Louis County Parks, the County Libraries, Greenscape Gardens and many other local conservation organizations. This collaboration strives to increase local knowledge about the importance of pollinators and encourage people to plant pollinator gardens.

## April 17th Meeting

Jonathan Beard of Springfield, Missouri has been involved with photographing, documentation, mapping, and the management of caves primarily in Missouri, Kansas and Arkansas since 1970. In that span he has visited more than 1,400 caves in 21 states in more than 4,000 cave trips. He has participated in more than 550 cave mapping expeditions and the drafting of many of those cave maps. He has taken more than 10,000 photographs of caves including some he will share with us at the meeting. Between 1983 and 2017, Mr. Beard managed or co-managed 11 privately-owned gated caves in southwest Missouri and has designed and helped install several cave gates to prevent unauthorized entry and vandalism. Since 1983, he has directed the cleanup and restoration of over 100 caves in four states, including the reattachment of more than 1,400 broken stalagmites and stalactites. He is the principle author of "Caring for Your Karst," a full-color booklet for cave owners that has been distributed to thousands of landowners in Missouri.



Image by Dug Threewitt

Mr. Beard is a retired training designer of 3M Company in Springfield and spends much time with wife Alicia, son Chris and two granddaughters. He will continue to photograph and restore caves primarily in the Ozarks.

## April Field Trip

Join Tim Bade and Dug Threewitt on April 21st for a Night Photography Shoot at Tim's property in Dittmer, Missouri. The group will meet at the Price Chopper in House Springs between 6:15 pm and 6:30 pm. Sunset on the 21st is at 7:45 pm. Participants will need to bring a camera, tripod, cable release, and a flashlight. If you are interested in attending, you must sign up in advance. You can sign up at the March or April meetings or by contacting Tim at 314-378-0757.

## May Field Trip

We are once again offering an early evening/sunset shoot at Shaw Nature Reserve on Saturday, May 19th. We will meet at 6:00 p.m. at the Carriage House adjacent to the Whitmire Wildflower Garden. Wine and cheese and other refreshments will be provided. Space is limited and there is a fee of \$15 per person to cover the Nature Reserve's expenses. To register, members should see Barb Addelson at the table in the back of the auditorium at the March, April, or May meetings or you may contact Barb at [baddelson@sbcglobal.net](mailto:baddelson@sbcglobal.net) to hold a spot and arrange for payment. Pre-registration and pre-payment are required so we can plan ahead for purchasing refreshments. Payment may be made by check made out to MoNEP. We will also accept cash at the meeting, but we would appreciate it if you would provide the exact amount so we do not need to make change. Further details will be sent to registered participants prior to the event.

## Of Interest

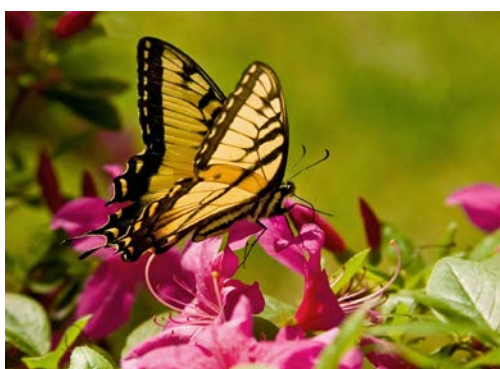
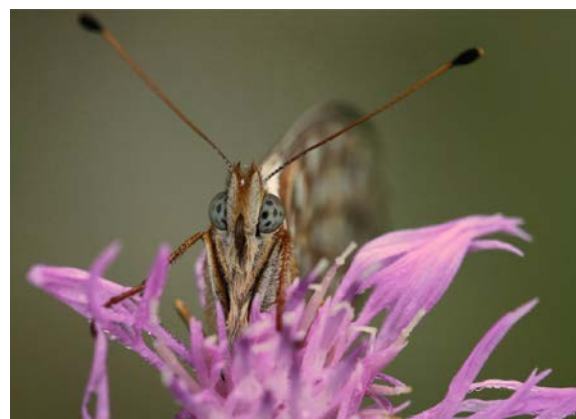
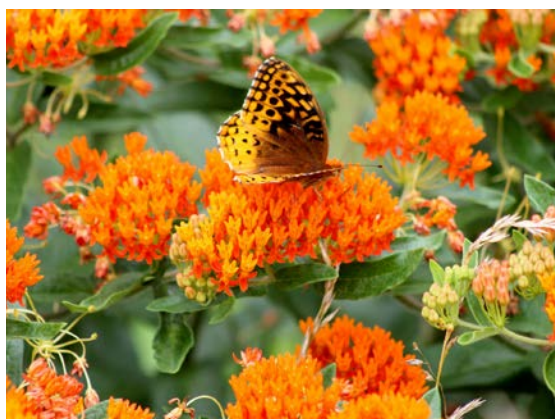
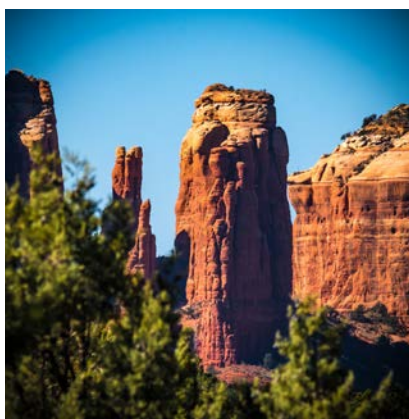
Thanks to Lois Walsh for sharing the following: Coming to PBS on Tuesday, April 24th is *Battle on the Booming Grounds: Last Dance of the Prairie Chicken*. The film documents the natural history, behaviors and natural habitat of the prairie chicken. It also highlights the wider environmental issues around these denizens of the tall grass prairies.

The mission of the Missouri Nature and Environmental Photographers is to provide a forum for individuals interested in the field of nature photography and the environment, provide education, gather and disseminate information, and promote nature photography as an art form and medium of communication.

Monthly meetings are held on the 3rd Tuesday of the month, except for December. Meetings start at 6:30 pm. Specific dates and meeting locations are posted in the newsletter and on the website. The bi-monthly newsletter is edited by Barbara Addelson and designed by Dug Threewitt.

Visit our website at [www.monep.org](http://www.monep.org)





# CLOSE-UP

Published Bi-Monthly by Missouri Nature and Environmental Photographers  
Volume 23, Number 3  
May - June 2018

# MoNEP News

## MoNEP Facebook Page

Last year we asked members to let me know if they were comfortable with MoNEP posting any of their images from the MoNEP Holiday Show and *Show & Share* presentations on the MoNEP Facebook page. Given the concerns many people have about sharing information or images on Facebook, we are once again asking for special permission from those members who are willing to allow us to use their images on Facebook. If you agree, and haven't already done so, please send an email to me at [baddelson@sbcglobal.net](mailto:baddelson@sbcglobal.net) indicating that I have your permission to do so or sign the sheet at our next meeting. Note that the images posted will be set at a low resolution. If we don't receive an email from you or have your signature on the list we printed, we will not use any of your images on our Facebook page. If you have any questions, please contact me at the above email. If you have not yet visited our page, you can find it on Facebook @MONaturephoto, or [www.facebook.com/MONaturephoto](http://www.facebook.com/MONaturephoto).

## May 19th Field Trip – Shaw Nature Reserve

There are still a few spaces for our early evening/sunset shoot at Shaw Nature Reserve on Saturday, May 19th. We will meet at 6:00 p.m. at the Carriage House adjacent to the Whitmire Wildflower Garden. Wine and cheese and other refreshments will be provided. Space is limited and there is a fee of \$15 per person to cover the Nature Reserve's expenses. To register, members should see Barb Addelson at the table in the back of the auditorium at the May meeting or you may contact Barb at [baddelson@sbcglobal.net](mailto:baddelson@sbcglobal.net) to hold a spot and arrange for payment. Pre-registration and pre-payment are required so we can plan ahead for purchasing refreshments. Payment may be made by check made out to MoNEP. We will also accept cash at the meeting, but we would appreciate it if you would provide the exact amount so we do not need to make change. Further details will be sent to registered participants by email prior to the event.

## Rescheduled Night Photography Field Trip - June 9th

Join Tim Bade and Dug Threewitt on June 9th for a Night Photography Shoot at Tim's property near Dittmer, Missouri. The group will meet at the Price Chopper in House Springs at 7:00 pm. Sunset on the 21st is at 7:45 pm. Participants will need to bring a camera, tripod, cable release, and a flashlight. If you are interested in attending, you must sign up in advance. You can sign up at the May meeting or by contacting Tim at 314-378-0757.

## Members and Membership

### New Members

We are pleased to welcome new members, Bill Armon and Bill Roswit to MoNEP. We are glad to have you on board.

### Member News

Margy Terpstra's exhibit, *Warblers!* opened at Powder Valley Nature Center on May 1st. The exhibit features Margy's photographs of 29 different species of wood warblers as they fed, drank, and bathed in and around her backyard stream and water bubbler. These beauties have often been called the gems of the forests, the butterflies of the bird world. Warbler migration is a high point for birders and photographers each spring as they move north through Missouri and Illinois along the Mississippi Flyway from Central and South America to their breeding grounds. The wood warblers are only found in the Americas, and although a number of species nest in Missouri and Illinois, many of them merely pass through this region as they migrate to their nesting grounds farther north.

Cover Images (from left to right and top to bottom):

Jerry Miller, Donald Adams, Roxanna Cummings, Brenda Fesser, Robert Charity, Sandy Miller, Barbara Addelson, Vearl Brown, Tim Bade, Joe Kopp, Don Morice



# MoNEP Meetings

## Meeting Dates, Times and Locations

Dates: Tuesday, May 15th from 6:30 to 8:30 pm

Tuesday, June 19th from 6:30 to 8:30 pm

MoNEP meetings are held on the third Tuesday of each month, except for the December meeting. MoNEP meets at Powder Valley Conservation Area Nature Center in Kirkwood. Powder Valley's address is 11715 Cragwold Rd., Kirkwood, MO 63122. The meetings run from 6:30 p.m. - 8:30 p.m.

## Show and Share Nature Images

*Submissions Due Dates: 5/12 for the May 15th Meeting, 6/16 for the June 19th Meeting*

Members are invited to share up to five (5) nature-related images at the upcoming meetings. For those members who would like a little inspiration for Show and Share, we offer a suggested topic each month. These are suggestions only and you may show any nature related images you would like. May: *Wildlife* and June: *Birds*

To submit for Show and Share:

- Resize images so vertical images are 1,800 pixels high and horizontal images are 1,800 pixels wide.
- Name your images according to the directions at [monep.org](http://monep.org) under tips.
- Save your images as .jpg files.
- Compress your five resized images into a zip file.
- Attach the zip file to an email addressed to [share@monep.org](mailto:share@monep.org) by midnight, Saturday, May 12th for the May meeting and June 16th for the June meeting.

Although submissions usually get an email response before the meeting, if you do not get a notice and want to confirm that your submission has been received, please contact Jerry Miller by email at [sirlukeman@yahoo.com](mailto:sirlukeman@yahoo.com) or by phone at 314-517-6395. For further instructions see Uploading Show and Share Images in the tips section at [monep.org](http://monep.org).

## May 15th Meeting – Matt Miles on Wildlife Photography

Join us as we welcome award-winning wildlife photographer Matt Miles for a presentation of *Behind the Lens*. Matt has backpacked, floated, snorkeled, and explored virtually every county in Missouri to photograph wildlife and wild lands for more than 20 years. He will describe many of the rare and dramatic moments he has captured with his camera—images that are now featured in his new photo book: *Missouri, Wild and Wonderful*. His entertaining presentation also includes fascinating facts about our natural world. Matt is an environmental consultant, who lives in rural Webster County in southwest Missouri. For a preview of Matt's work, visit his website, [mattmilesphotography.com](http://mattmilesphotography.com). An opportunity to purchase signed copies of *Missouri, Wild and Wonderful* will follow the presentation.



Image courtesy Matt Miles

## June 19th Meeting – Patrick Jones on Large Bird Photography

MoNEP member, Patrick Jones, will be presenting *Tips and Techniques for Large Bird Photography* at the June meeting. This program will focus on techniques for capturing photographs of large birds. Although most of the photographs Patrick will show have been taken in Florida, these techniques can be applied to any area of the country. Patrick will cover camera settings, equipment, support, use of blinds, and other miscellaneous items. He will also discuss how to improve your bird photography before taking that once-in-a-lifetime trip.



Image by Vearl Brown

Patrick has been an avid photographer for over 50 years. During the course of that time he has developed a deep passion for nature and outdoor photography. His travels have taken him to over thirty of the national parks and numerous wildlife sanctuaries throughout the country. He has been a member of MoNEP since its start and a member of the St. Louis Camera Club for over 20 years.

## March Meeting Recap

Thank you, Chris Hartley for presenting *Inviting Native Bees Into Your Garden* at the March meeting. Chris introduced us to the bees of all types including the non-native honeybee, which European settlers brought to America. They were introduced because they are the only bees that produce wax, which was used to make candles, and honey. In addition to honeybees, there are a large variety of native bee species that are extremely important pollinators for both wildflowers and crops. To help in the conservation of native bees, some of which are endangered, Chris suggested planting members of the carrot family, mints, and asters to provide them with food sources. He also encouraged the use of biological controls rather than insecticides to eradicate harmful insects, because insecticides kill both good and bad insects. We thank Chris for a fascinating presentation and for an eye-opening introduction to the amazing variety of bee species around us.

## April Meeting Recap

Jonathan Beard is an avid speleologist. He studies caves and helps explore, map, and protect them. He works with other enthusiasts to rectify some of the damage done by vandals, reattaching formations that people have destroyed. Jonathan shared the basics of caving and how to dress for exploring underground as well as some techniques for photographing in caves. He also showed us some of the wonderful cave formations that can be seen in some of the 8,000 Missouri caves. He also discussed a number of the animal species that live in caves. For more information, visit <http://mospeleo.org>. Thanks to Jonathan for coming from across the state to share his enthusiasm and wealth of knowledge. We appreciate the work he does to preserve and protect our caves.

The mission of the Missouri Nature and Environmental Photographers is to provide a forum for individuals interested in the field of nature photography and the environment, provide education, gather and disseminate information, and promote nature photography as an art form and medium of communication.

Monthly meetings are held on the 3rd Tuesday of the month, except for December. Meetings start at 6:30 pm. Specific dates and meeting locations are posted in the newsletter and on the website. The bi-monthly newsletter is edited by Barbara Addelson and designed by Dug Threewitt.

**Visit our website at [www.monep.org](http://www.monep.org)**





# CLOSE-UP

Published Bi-Monthly by Missouri Nature and Environmental Photographers  
Volume 23, Number 4  
July - August 2018



# MoNEP News

## Holiday Show Submissions

Every year we hold a Holiday Show and party on the second Tuesday in December in place of our monthly meeting. This year, it will be on **December 11th** at Powder Valley. The highlight of the evening is a program of members' images put to music by Jerry Miller and Pat Burgess. We encourage current members to submit twenty of their best nature images, some of which will be included in the show. Image submissions for the 2018 MoNEP Holiday Show are due by the **September 18th** meeting if you are submitting in person, or by September 30th for email submissions. In addition to your twenty nature shots, we would like to have images of other members in action. Submissions can be turned in to Michelle Jones or Barb Addelson at the back table at the August and September meetings. You may also submit your images by sending them to [share@monep.org](mailto:share@monep.org) by the September 30th deadline. Below are the guidelines for submission.

Format:

All submissions should be digital. Place up to 20 images on a CD-ROM or thumb drive in a folder with your name as part of the folder's title (e.g. JSmith 2018 Holiday Show). Each individual photo file should also have your name included as part of its title. (e.g. JaneSmith-GBHeron) However, no text should appear on any images.

Image size:

Resize your images so vertical images are 1,800 pixels high and horizontal images are 1,800 pixels wide. The resolution can be between 96 and 300 dpi (dots per inch). The overall size of each image should be less than 2.5 MB. For further information about resizing your images in Photoshop or Lightroom, please see the instructions at [www.monep.org/tips.html](http://www.monep.org/tips.html).

Here are a number of things to bear in mind as you select images to submit:

1. We would like a variety of your strongest nature subjects.
2. The more images we get, the greater our flexibility in choosing the right subjects for the show.
3. Remember to include images from all seasons.
4. Only submit images you have not submitted in the past.
5. We cannot use all of the images provided, but we aim to include images from everyone who submits photographs.
6. In addition to your 20 images, please submit photos of yourself or other MoNEP members in the act of photographing nature!

If you have any questions please let us know.

## Rescheduled Night Photography Field Trip – July 21st

Join Tim Bade and Dug Threewitt on July 21st for a Night Photography Shoot at Tim's property near Dittmer, Missouri. The group will meet at the Price Chopper in House Springs at 6:30 pm. Sunset on the 21st is at 8:21 p.m. Participants will need to bring a camera, tripod, cable release, and a flashlight. If you are interested in attending, you must sign up in advance. You can sign up at the July meeting or by contacting Tim at 314-378-0757.



*Image by Dug Threewitt*

Cover Images (from left to right and top to bottom):

Dick Roman, Jerry Miller, Larry Morrison, Allen Ahner, Barbara Addelson, Joe Kopp, Brenda Fesser, Vearl Brown, Tim Bade, Kate Sprague, Don Morice



# Members and Membership

## New Members

Please welcome our newest members: Pamela Rak and Jonathan Raskas. Thanks for joining MoNEP!

## Member News

Allen Ahner has organized an African Safari in March of 2019. The accommodation is a 5 star lodge and the game drives are led by a gentleman voted as the best guide in the private reserve. The cost is a lot less than you think! Contact Allen at 314-791-9174 or [allenahnerphotography@gmail.com](mailto:allenahnerphotography@gmail.com). There are only a few spots left.

Sandy Brooks has been developing *Hidden Gems*, a natural events calendar related to the St. Louis County Parks. The calendar lists when particular natural events occur in our area. Each natural event has links to the county park in which it occurs, as well as links for more information about the event and to photographs of the subject. Sandy is still working on gathering all of the images for the calendar. Visit <https://www.flickr.com/photos/28728673@N06/albums> to see the images she has thus far. The images will be available for use to support the parks and Sandy welcomes images from other photographers. Full credit will be given to any photographer who chooses to submit images to Sandy for this project.

Jonathan Gabriel Raskas, a new member, is releasing his first written book, *Infinito: 22*, which also includes about 40 of his landscape photographs, mostly from Oregon. The stories in his book are true, detailed, humorous, and heartbreaking about raising three children from kindergarten to college. For information about his book, see Jonathan's website, [infinito22.com](http://infinito22.com).

## MoNEP Meetings

### Meeting Dates, Times and Locations

*Dates: Tuesday, July 17th from 6:30 to 8:30 pm*

*Tuesday, August 21st from 6:30 to 8:30 pm*

MoNEP meetings are held on the third Tuesday of each month, except for the December meeting. MoNEP meets at Powder Valley Conservation Area Nature Center in Kirkwood. Powder Valley's address is 11715 Cragwold Rd., Kirkwood, MO 63122. The meetings run from 6:30 p.m. - 8:30 p.m.

## Show and Share Nature Images

*Submissions Due Dates: 7/14 for the July 17th Meeting, 8/18 for the August 21st Meeting*

Members are invited to share up to five (5) nature-related images at the upcoming meetings. For those members who would like a little inspiration for Show and Share, we offer a suggested topic each month. These are suggestions only and you may show any nature related images you would like. July:

*Pollinators* and August: *The Skies*.

To submit for Show and Share:

- Resize images so vertical images are 1,800 pixels high and horizontal images are 1,800 pixels wide.
- Name your images according to the directions at [monep.org](http://monep.org) under tips.
- Save your images as .jpg files.
- Compress your five resized images into a zip file.
- Attach the zip file to an email addressed to [share@monep.org](mailto:share@monep.org) by midnight, Saturday, July 14th for the July meeting and August 18th for the August meeting.

Although submissions usually get an email response before the meeting, if you do not get a notice and want to confirm that your submission has been received, please contact Jerry Miller by email at [sirlukeman@yahoo.com](mailto:sirlukeman@yahoo.com) or by phone at 314-517-6395. For further instructions see Uploading Show and Share Images in the tips section at [monep.org](http://monep.org).

## July 17th Meeting

Our July meeting will feature a showing of the 2017 Holiday Show. This is a great opportunity to see some of our members' superb images artfully set to music by Jerry Miller and Pat Burgess. This will also provide newer members with a preview of what the main event at the December Holiday Show and Party is like, so you can think about what to include in your submissions for the 2018 show.



*Image by Allen Ahner*

## August 21st Meeting

Have you considered entering a photography contest or posting images on line, but have concerns about retaining the rights to your image? Join us as lawyer Erika Cohn, a volunteer with the St. Louis Volunteer Lawyers and Accountants for the Arts, helps us sort out the facts and rights we have related to our pictures. Her program will cover how to protect our images in the social media arena, and other areas such as photo contests.

Erika is an Associate Professor of Law at St. Louis University where she teaches Intellectual Property Law, Trademark and Unfair Competition Law, and Advanced Legal Research. She also lectures on copyright issues and specialized legal research topics. She has a B.A. from Vanderbilt University, a J.D. from the University of Illinois College of Law, and an M.L.S. from the University of Missouri.

## July Field Trip at The Butterfly House

Scott Avetta will be leading a morning field trip on Saturday, July 21st to the outdoor native garden at The Butterfly House. Scott will be there at 7:00 a.m., although members can join the group a bit later in the morning. He will be shooting in the garden area in front of the building. It is a short, flat walk from the nearby parking lot to the garden. He expects to be able to photograph a variety of Missouri native plants in addition to dragonflies, butterflies, and other insects. Almost any camera or lens will work in this situation. Scott emphasized that, given our recent extremely heat, this is an ideal situation with easy access to your vehicle and cool drinks.



*Image by Scott Avetta*

## MoNEP Seeks Field Trip Leaders

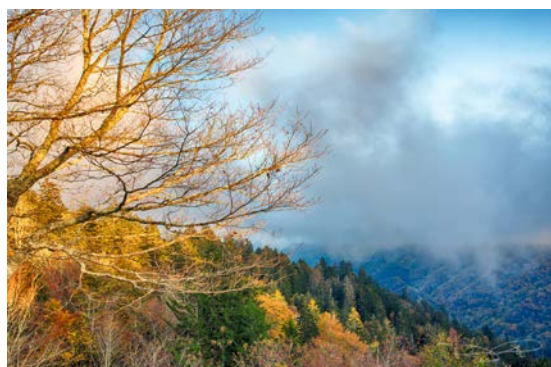
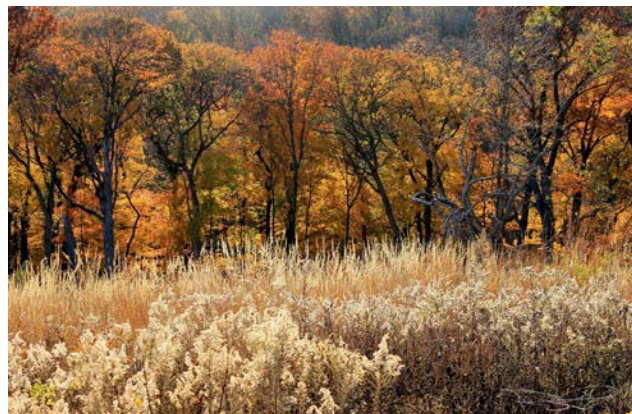
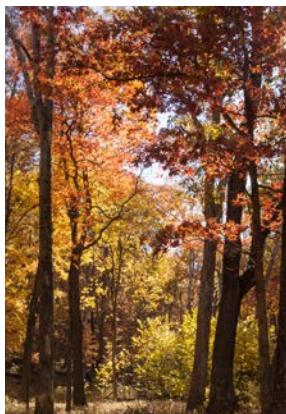
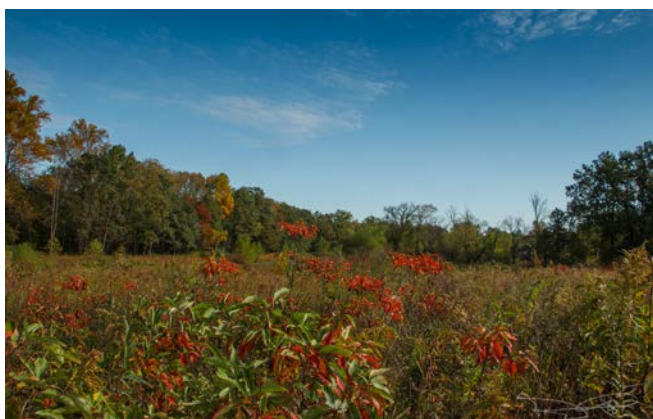
MoNEP does not have a dedicated Field Trip Leader so we are seeking volunteers who would be willing to take the lead on a half-day or daylong field trip. All you would have to do is provide a description of the spot and directions, as well as start and end times to the newsletter editor. If you have a favorite spot in Missouri or Illinois you would be willing to share with others, please contact Kathy Cherry at [fishnclck@sbcglobal.net](mailto:fishnclck@sbcglobal.net). We will work with you to schedule and organize the trip.

The mission of the Missouri Nature and Environmental Photographers is to provide a forum for individuals interested in the field of nature photography and the environment, provide education, gather and disseminate information, and promote nature photography as an art form and medium of communication.

Monthly meetings are held on the 3rd Tuesday of the month, except for December. Meetings start at 6:30 pm. Specific dates and meeting locations are posted in the newsletter and on the website. The bi-monthly newsletter is edited by Barbara Addelson and designed by Dug Threewitt.

Visit our website at [www.monep.org](http://www.monep.org)





# CLOSE-UP

Published Bi-Monthly by Missouri Nature and Environmental Photographers  
Volume 23, Number 5  
September - October 2018



# MoNEP News

## Holiday Show Submissions

This year, MoNEP's annual Holiday Show and party will be held on **December 11th** at Powder Valley. The main event is a program of members' images put to music by Jerry Miller and Pat Burgess. We encourage current members to submit twenty of their best nature images, some of which will be included in the show. Image submissions for the 2018 MoNEP Holiday Show are due by the September 18th meeting if you are submitting in person, or by **September 30th** for email submissions. In addition to your twenty nature shots, we would like to have images of other members in action. Submissions can be turned in to Michelle Jones or Barb Addelson at the back table at the September meetings. You may also submit your images by sending them to [share@monep.org](mailto:share@monep.org) by the September 30th deadline. Below are the guidelines for submission.

### Format:

All submissions should be digital. Place up to 20 images on a CD-ROM or thumb drive in a folder with your name as part of the folder's title (e.g. JSmith 2018 Holiday Show). Each individual photo file should also have your name included as part of its title. (e.g. JaneSmith-GBHeron) However, no text should appear on any images.

### Image size:

Resize your images so vertical images are 1,800 pixels high and horizontal images are 1,800 pixels wide. The resolution can be between 96 and 300 dpi (dots per inch). The overall size of each image should be less than 2.5 MB. For further information about resizing your images in Photoshop or Lightroom, please see the instructions at [www.monep.org/tips.html](http://www.monep.org/tips.html).

Here are a number of things to bear in mind as you select images to submit:

1. We would like a variety of your strongest nature subjects.
2. The more images we get, the greater our flexibility in choosing the right subjects for the show.
3. Remember to include images from all seasons.
4. Only submit images you have not submitted in the past.
5. We cannot use all of the images provided, but we aim to include images from everyone who submits photographs.
6. In addition to your 20 images, please submit photos of yourself or other MoNEP members in the act of photographing nature!

## MoNEP Seeks Field Trip Leaders

MoNEP does not have a dedicated Field Trip Leader so we are seeking volunteers who would be willing to take the lead on a half-day or daylong field trip. All you would have to do is provide a description of the spot and directions, as well as start and end times to the newsletter editor and be there to help orient the group to the site. If you have a favorite spot in Missouri or Illinois that you would be willing to share with others, please contact Kathy Cherry at [fishnclick@sbcglobal.net](mailto:fishnclick@sbcglobal.net). We will work with you to schedule and organize the trip.



*Image by Linda Moder*

Cover Images (from left to right and top to bottom):

Dug Threewitt, Kate Sprague, Robert Charity, Scott Evers, Kathy Cherry, Vearl Brown, Roxanna Cummings, Don Morice, Jerry Miller, Jane Griesenauer, Don Morice



# MoNEP Meetings and Field Trips

## Meeting Dates, Times and Locations

*Dates: Tuesday, September 18th from 6:30 to 8:30 pm*

*Tuesday, October 16th from 6:30 to 8:30 pm*

MoNEP meetings are held on the third Tuesday of each month, except for the December meeting. MoNEP meets at Powder Valley Conservation Area Nature Center in Kirkwood. Powder Valley's address is 11715 Cragwold Rd., Kirkwood, MO 63122. The meetings run from 6:30 p.m. - 8:30 p.m.

## Show and Share Nature Images

*Submissions Due Dates: 9/15 for the September Meeting, 10/13 for the October Meeting*

Members are invited to share up to five (5) nature-related images at the upcoming meetings. For those members who would like a little inspiration for Show and Share, we offer a suggested topic each month. These are suggestions only and you may show any nature related images you would like. September: *Curves* and October: *Fall Color*

To submit for Show and Share:

- Resize images so vertical images are 1,800 pixels high and horizontal images are 1,800 pixels wide.
- Name your images according to the directions at [monep.org](http://monep.org) under tips.
- Save your images as .jpg files.
- Compress your five resized images into a zip file.
- Attach the zip file to an email addressed to [share@monep.org](mailto:share@monep.org) by midnight, Saturday, September 15th for the September meeting and October 13th for the October meeting.

Although submissions usually get an email response before the meeting, if you do not get a notice and want to confirm that your submission has been received, please contact Jerry Miller by email at [sirlukeman@yahoo.com](mailto:sirlukeman@yahoo.com) or by phone at 314-517-6395. For further instructions see Uploading Show and Share Images in the tips section at [monep.org](http://monep.org).

## September 18th Meeting – Cellphone Photography

Jeff Hirsch will return to MoNEP to present a program on *Cellphone Photography* at the September meeting. He will share some of his many tips for creating quality images using your phone's camera. Jeff is a photographer and photo-educator with over 25 years of experience in the field of digital imaging and graphic design. An expert in "geek-to-English" translation and an Adobe Certified Expert in Lightroom and Photoshop, he teaches photography and photo workflow to individuals and groups. Jeff is a frequent presenter at local and regional camera clubs where he speaks on a wide variety of photographic subjects including street and travel photography, color management, workflow and organization, and more. Along with his wife Donna, Jeff leads photo travel workshops in beautiful locations at home and abroad including exotic destinations like Iceland, Cuba, Italy, New Zealand, Cambodia, and Thailand. Information about Jeff's classes and workshops can be found at: [www.jeffhirsch.com](http://www.jeffhirsch.com)



*Image courtesy Jeff Hirsch*

## October 16th Meeting – St. Charles County Parks

Nancy Gomer, the marketing coordinator/public information officer, and Gail Schatzler, park horticulture supervisor of the St. Charles County Parks will be joining us in October to discuss the variety of parks, amenities, programs, and opportunities in the vast St. Charles County Parks system.

Currently, there are 13 parks run by St. Charles County that cover over 2,800 acres. These parks provide opportunities for birding including sightings of bald eagles, wildflower and prairie areas for photography and good locations for astronomy. The St. Charles County Parks received an award from the Missouri Prairie Foundation in 2017 for the work they have done with native prairies. Another site, Veterans Tribute Park, will open later this year.

## Field Trip Recaps

Butterfly Gardens - Scott Avetta led two field trips recently: one in July to the butterfly garden in front of the Butterfly House in Faust Park and another, on the first day of September, to the home butterfly garden of Tom Terrific. Both of these excursions drew about 14 MoNEP members, who shared excellent photographic opportunities presented by contained landscapes designed to attract pollinators. The visit to the Butterfly House, under clear skies and a light breeze, provided lots of dragonflies in addition to other insects. The various beds at Tom Terrific's in Crestwood attracted a range of butterflies and other pollinators. There were numerous Monarchs flitting about, laying eggs on milkweeds and the slender mountain mint hosted four or five common buckeye butterflies at a time. Many skippers were visiting a variety of plants and there was evidence of black swallowtail caterpillars feeding on parsley, bronze fennel and golden Alexander, their main host plants.

Sunflowers at Columbia Bottoms - On a beautiful morning, a group of early risers met at Columbia Bottoms the morning of August 11 to photograph sunflowers. Since the staff at Columbia Bottoms staggers the planting, there were two fields of the golden beauties to photograph. The morning gave us cooler temps, no wind, a little ground fog and a rising sun that lit up the fields. Everyone had a good time photographing the towering giants. Thanks to Mark McAmish for scouting the area and arranging the field trip.



*Image by Dug Threewitt*

Night Shoot – Tim Bade and Dug Threewitt organized a shoot to capture the night skies. It had been scheduled for the spring, but had been postponed several times due to poor weather. The shoot finally happened on a clear night in July. Ten people attended and photographed the Milky Way and the moon. A few people stayed later and shot star trails. Although the moon was bright, making it hard to get a great image of the Milky Way, everyone had a fun time.

## Other Events of Interest

Kate Sprague shared the following information that might be of interest to our members: Wildlife photographer Steve Winter will be presenting at McKendree University on October 17th at 7:30 pm. He is best known for his work on conserving and photographing the big cats. Tickets are \$20/person, \$18/senior. For more information visit [www.mckendree.edu/the\\_hett/nat-geo-live.php](http://www.mckendree.edu/the_hett/nat-geo-live.php).

The mission of the Missouri Nature and Environmental Photographers is to provide a forum for individuals interested in the field of nature photography and the environment, provide education, gather and disseminate information, and promote nature photography as an art form and medium of communication.

Monthly meetings are held on the 3rd Tuesday of the month, except for December. Meetings start at 6:30 pm. Specific dates and meeting locations are posted in the newsletter and on the website. The bi-monthly newsletter is edited by Barbara Addelson and designed by Dug Threewitt.

**Visit our website at [www.monep.org](http://www.monep.org)**





## MoNEP News

### MoNEP Holiday Show – Tuesday, December 11th

Join us at the 2018 MoNEP Holiday Show and party, which will be held on Tuesday, December 11th, starting at 6:15 p.m. at Powder Valley Nature Center in Kirkwood. Powder Valley Nature Center in Kirkwood, Missouri. Family and friends are invited to attend.

The Show:

Jerry Miller and Pat Burgess do the hard work of creating the program each year. Their fabulous digital presentation of members' images set to music will begin at 7:15.

Refreshments:

We will be offering light fare – cheese, veggie and fruit trays, soft drinks, coffee and tea. Everyone is invited to bring an appetizer or dessert to share. Please make sure that anything you bring is easily served and can be eaten without cutlery.

### MoNEP Members' Exhibit at Powder Valley

MoNEP will have an exhibit of members' images on display at Powder Valley from November 1st until the day after the holiday party. There will be 29 images by 23 photographers included in the Fall Invitational Exhibit. There will be an eclectic mix of subject matter with the majority of work photographed in Missouri. Mammal and bird portraits, landscapes, close-ups and a few abstracts will be included. Images from the exhibit will be returned to members at the January meeting. Thanks to all the members who are participating. If you are willing to help Lori take down the exhibit please contact her at [purkyl8r@aol.com](mailto:purkyl8r@aol.com).

### 2018 Membership Renewals

MoNEP membership runs from January through December each year, so it is time for all members to renew! Dues are \$30 per person and \$40 for a household of up to four. There are three ways to renew your membership:

1. Membership dues may be submitted in person at the November meeting along with your completed form. We will not be collecting membership forms or payment during the Holiday Show and party in December, but will start accepting forms and payment at meetings again starting in January. At the meetings, you can pay with cash or by a check made out to MoNEP. If you pay by cash, please be sure to have the exact amount.
2. You can mail your renewal form, along with a check made out to MoNEP, to the MoNEP membership chair, Michelle Jones at #D 1606 Forest Springs Lane, Ballwin, MO 63021. Please do not mail cash.
3. You can pay anytime using PayPal by visiting our website at <http://monep.org/membership.html>.

If you have questions about membership, please contact Michelle Jones at 314-496-7616 or by email at [michellecjones92@gmail.com](mailto:michellecjones92@gmail.com).

# CLOSE-UP

# MoNEP Meetings and Field Trips

## Meeting Dates, Times and Locations

*Date: Tuesday, November 20th from 6:30 to 8:30 pm at Powder Valley Nature Center*

MoNEP meetings are held at Powder Valley Conservation Area Nature Center in Kirkwood. Powder Valley's address is 11715 Cragwold Rd., Kirkwood, MO 63122. The meeting time runs from 6:30 to 8:30 p.m.

## Show and Share Nature Images

*Submissions Due: November 17th for the November 20th Meeting*

Members are invited to share up to five (5) nature-related images at the upcoming meetings. For those members who would like a little inspiration for Show and Share, we offer a suggested topic each month. These are suggestions only, and you may show any nature related images. November theme: *Fall Color or Photographer's Choice*

To submit for Show and Share:

- Resize images so vertical images are 1,800 pixels high and horizontal images are 1,800 pixels wide.
- Name your images according to the directions at [monep.org](http://monep.org) under tips.
- Save your images as .jpg files.
- Compress your five resized images into a zip file.
- Attach the zip file to an email addressed to [share@monep.org](mailto:share@monep.org) by Saturday, November 17th for the November meeting.

## November 20th Meeting – Steve Sands

Once a source of wonder, the star-filled nights of just a few years ago are vanishing in a yellow haze. Human-produced light pollution not only diminishes our view of the stars, but also threatens astronomy, disrupts ecosystems, can affect human circadian rhythms, and wastes energy at an estimated \$2.5 billion per year in the United States alone. Join us at the November meeting when Steve Sands speaks about the four primary issues related to light pollution: safety, wildlife, energy, and human health. Brochures and materials will be available at the meeting related to the topic of light pollution.

Steve Sands has long been involved in amateur astronomy and leads telescope viewing programs, both nighttime and solar, for the Watershed Nature Center in Edwardsville, Heartland Prairie and local Sierra Club. His interests include nighttime observing, solar observing, telescope systems, historic telescope renovation, astronomy public outreach, travel and photography. He has held the position of adjunct faculty member at Washington University and St. Louis University, teaching both astronomy and optics.



*Image courtesy Pam Caraffa*

The mission of the Missouri Nature and Environmental Photographers is to provide a forum for individuals interested in the field of nature photography and the environment, provide education, gather and disseminate information, and promote nature photography as an art form and medium of communication.

Monthly meetings are held on the 3rd Tuesday of the month, except for December. Meetings start at 6:30 pm. Specific dates and meeting locations are posted in the newsletter and on the website. The bi-monthly newsletter is edited by Barbara Addelson and designed by Dug Threewitt.

**Visit our website at [www.monep.org](http://www.monep.org)**